

PRISM¹² NANO+

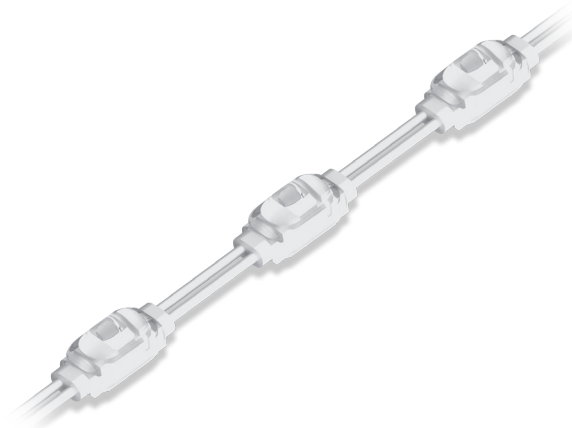
12
VDC



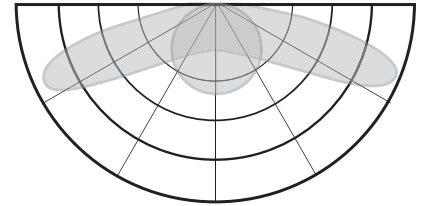
Premium 12V LED lighting solution for block acrylic signs and small channel letters

Specifications

- Dimensions L x W x H 0.82" x 0.33" x 0.34"
- LEDs per module..... 1
- Modules per foot 7.6
- Optimal can depth 1-3"
- Mounting options Peel-N-Stick
- Operating temp. -40° C to +70° C
- Environment IP66
- Life rating..... >54,000 hours
- Packaging..... 19.7 ft (150 modules) per bag,
7 bags per carton
- Warranty..... 10-Year Product / Labor



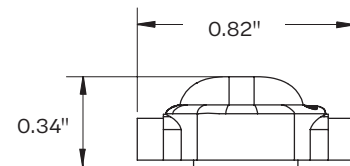
Luminous Intensity Distribution



Whites

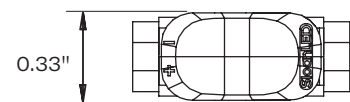
SKU	Color temperature	Power per module	Lumens per module (nominal)	Efficacy
701269-7W12NJ1-MB	7200 K	0.22 W	35	160 lm/W
701269-6W12NJ1-MB	6500 K			
701269-5W12NJ1-MB	5000 K			
701269-4W12NJ1-MB	4000 K			
701269-3W12NJ1-MB	3000 K		33.5	152 lm/W

Dimensions



Colors

SKU	Color	Nominal wavelength	Power per module	Lumens per module (nominal)	Efficacy
701269-RD12NJ1-MB	Red	625	0.13 W	4.9	38 lm/W
701269-GR12NJ1-MB	Green	527		13.5	104 lm/W
701269-BL12NJ1-MB	Blue	470		3.0	23 lm/W



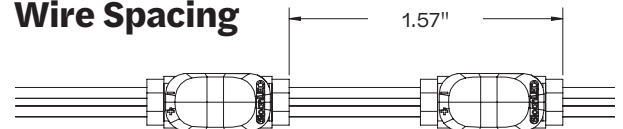
Power Supply Options

12 VDC Power Supply*	White 7200 K, 6500 K, 5000 K, 4000 K, 3000 K	Red, Green, Blue
20 W	10.9 ft / 83 mods	18.1 ft / 138 mods
60 W	32.8 ft / 250 mods	54.5 ft / 415 mods
2 x 60 W	2 x 32.8 ft / 250 mods	2 x 54.5 ft / 415 mods
Power per foot in watts	1.68 W	0.99 W

* Configured for Class 2 Output.

SloanLED channel letter products are covered by US and foreign patents pending and covered by one or more of the following US patents issued: 6,932,495, 7,160,140, 7,241,031, 7,520,771, 7,931,386 and European Patent No. 1756471.

Wire Spacing



Density Guidelines

Model	Module color	Can Depth	Modules per foot	Max. stroke coverage per row		Inches on center dark vinyl	Inches on center perforated vinyl
				Single row	Multiple rows		
Nano+: Acrylic block letters	White (7200 K, 6500 K, 5000 K, 4000 K, 3000 K), Red, Green, Blue	1.2"	7.6	2"	1.8" on center	Testing required	Testing required
Nano+: Channel letters	White (7200 K, 6500 K, 5000 K, 4000 K, 3000 K)	1"	7.6	2.5"	1.5" on center	Testing required	Testing required
		2"		3"	2.5" on center		
		3"		4"	3.5" on center		
		4"		5"	6" on center		
	Red	7.6	1"	2.5"	1.5" on center	Testing required	Testing required
			2"	3"	2.5" on center		
			3"	3"	4" on center		
			4"	4"	5" on center		
	Green	7.6	1"	2.5"	1.5" on center	Testing required	Testing required
			2"	3"	2.5" on center		
			3"	3"	3.5" on center		
			4"	3.5"	4.5" on center		
	Blue	7.6	1"	2.5"	1.5" on center	Testing required	Testing required
			2"	3"	2.5" on center		
			3"	3"	4" on center		
			4"	3.5"	4.5" on center		

These guidelines are intended to provide only an approximation of product required for your sign, assuming an optimal balance of performance and cost. Principal Sloan is not responsible for the actual results based on the use of these guidelines. All spacing guidelines in this chart were done using 7328 White Acrylic faces. Other materials, thicknesses, and color can affect these guidelines in your sign. To ensure accuracy, it is recommended that you test the product in your specific application in a dark setting prior to installation. If you have concerns or questions about the materials you are using for your application please contact us for assistance.

Notes:

- It is recommended that you first test LED density in sample letter/cabinet to evaluate brightness, uniformity and color.
- Should you have questions or require assistance in testing, please contact your Principal Sloan customer service representative.
- Products can be used in can depths deeper or shallower than listed above, but testing is recommended.



principalsloan.com
325.227.4577
3490 Venture Dr., San Angelo, TX 76905