

# PRISMBEAM 3

24  
VDC



Pre-assembled, stick-based LED illumination for new & retrofit sign cabinet applications

## Specifications

Dimensions W × H..... Single-sided.....0.5" × 0.89"  
Double-sided.....0.5" × 1.27"

Efficacy.....165 lm/W

Color temp. (nominal).....6500 K

Optimum cabinet depth..... Single-sided.....5-8"  
Double-sided.....10-16"

Operating temp. ....-40° C to +60° C

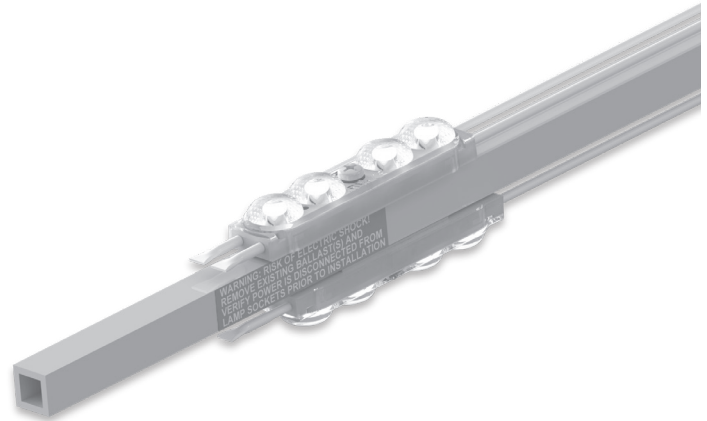
Protection class .....IP66 & IP68\*

Binning .....MacAdam Ellipse 3-Step (whites)

Fastening .....Mounts to existing lampholders

Life rating.....>60,000 hours

Warranty.....10-Year Product / Labor

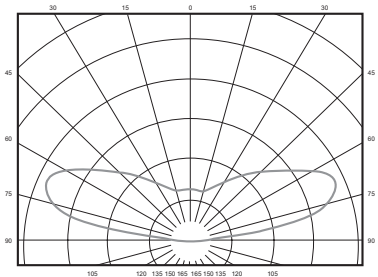


## Product Options

	Length	Nominal length	Mods/assembly	Lumens/assembly	Whips	Packaging (lamps per carton)	SKU*
SINGLE-SIDED	18"	15.91"	2	420	36"	8	701972-6W24PS183
	24"	21.91"	2	420			701972-6W24PS243
	30"	27.91"	3	630			701972-6W24PS303
	36"	33.91"	3	630			701972-6W24PS363
	42"	39.91"	4	840			701972-6W24PS423
	48"	45.91"	5	1050			16
	60"	57.91"	6	1260	701972-6W24PS603		
	64"	61.91"	6	1260	72"	8	701972-6W24PS643
	72"	69.91"	7	1470		16	701972-6W24PS723
	84"	81.91"	8	1680		8	701972-6W24PS843
	96"	93.91"	9	1890		16	701972-6W24PS963
	108"	105.91"	11	2310		8	701972-6W24PS1083
117"	114.91"	12	2520	8		701972-6W24PS1173	
120"	117.91"	12	2520		701972-6W24PS1203		
DOUBLE-SIDED	18"	15.91"	8	840	36"	8	701972-6W24PD183
	24"	21.91"	8	840			701972-6W24PD243
	30"	27.91"	12	1260			701972-6W24PD303
	36"	33.91"	14	1260			701972-6W24PD363
	42"	39.91"	16	1680			701972-6W24PD423
	48"	45.91"	18	2100			16
	60"	57.91"	24	2520	701972-6W24PD603		
	64"	61.91"	24	2520	72"	8	701972-6W24PD643
	72"	69.91"	26	2940		16	701972-6W24PD723
	84"	81.91"	32	3360		8	701972-6W24PD843
	96"	93.91"	36	3780		16	701972-6W24PD963
	108"	105.91"	40	4620		8	701972-6W24PD1083
	117"	114.91"	42	5040			701972-6W24PD1173
	120"	117.91"	44	5040	8	701972-6W24PD1203	



## Luminous Intensity Distribution



\* PrismBEAM 3 IP68 test parameters are 1.3 m submersion for 30 minutes. Do not mount in submerged application or where module will be directly exposed to prolonged flowing or dripping water.

Specifications subject to change without notice.



# PRISMBEAM 3

24  
VDC



Pre-assembled, stick-based LED illumination  
for new & retrofit sign cabinet applications

## Power Supply Options

† Configured for Class 2 Output.

24 VDC Power Supply*	Maximum lamps per power supply (single-sided/double-sided)													
	18"	24"	30"	36"	42"	48"	60"	64"	72"	84"	96"	108"	117"	120"
60 W	21 / 10	21 / 10	14 / 7	14 / 7	10 / 5	8 / 4	7 / 3	7 / 3	6 / 3	5 / 2	4 / 2	3 / 1	3 / 1	3 / 1
100 W	36 / 18	36 / 18	24 / 12	24 / 12	18 / 9	14 / 7	12 / 6	12 / 6	10 / 5	9 / 4	8 / 4	6 / 3	6 / 3	6 / 3
Watts/assembly	2.5 / 5.1	2.5 / 5.1	3.8 / 7.6	3.8 / 7.6	5.1 / 10.2	6.4 / 12.7	7.6 / 15.3	7.6 / 15.3	8.9 / 17.8	10.2 / 20.4	11.5 / 22.9	14.0 / 28.0	15.3 / 30.5	15.3 / 30.5

## Density Guidelines

Model	Module color	Can Depth	Inches on center
PrismBEAM 3 Single-sided	6500 K	4-5"	8"
		5-10"	12"
		10-12"	18"
PrismBEAM 3 Double-sided	6500 K	8-10"	8"
		10-20"	12"
		20-24"	18"

### Notes:

- 1) To minimize the potential for shadows/hot spots in applications when using frame support tubes/poles; mount modules or frame support tubes such that the tubes are centered in between modules and at a depth that will not directly interfere with the beam angle of the LEDs. Use SignComp Adjustable Frame Brace (P/N: 5357) or equivalent.
- 2) It is recommended that you first test the LED density in a sample cabinet to evaluate brightness, uniformity, and color.
- 3) Should you have questions or require assistance in testing, please contact your Principal Sloan customer service representative.
- 4) Products can be used in can depths deeper or shallower than listed above, but testing is recommended.

These guidelines are intended to provide only an approximation of PrismBEAM 3 product required for your cabinet, assuming an optimal balance of performance and cost. Principal Sloan is not responsible for the actual results based on the use of these guidelines. All spacing guidelines in this chart were done using 7328 White Acrylic faces. Other materials, thicknesses, and color can affect these guidelines in your sign. To ensure accuracy, it is recommended that you test the product in your specific application in a dark setting prior to installation. If you have concerns or questions about the materials you are using for your application please contact us for assistance.



principalsloan.com  
325.227.4577  
3490 Venture Dr., San Angelo, TX 76905

