

SlimLINER

Low-profile outdoor and indoor linear lighting

Specifications

Part number	5000 K.....	701956-5WL461
	3500 K.....	701956-3WL461
Dimensions L x W x H	46 in x 0.89 in x 0.35 in (1168 mm x 23 mm x 9 mm)	
Lumens per fixture	5000 K.....	970
	3500 K.....	825
In-field bends	Radial bend.....	12 in (305 mm)
Color temperatures (nominal) ..	5000 K, 3500 K	
Color rendering index (CRI)	5000 K.....	70 (nominal)
	3500 K.....	82 (nominal)
Estimated product lifetime	50,000 hours (L ₇₀)	
Operating temperature	-40° C to 70° C	
Protection class	IP66 & IP68*	
Special feature	Cuttable every 6 in (150 mm) for two usable sides	
Power	2.25 W per foot (7.4 W per meter), 9.0 W per fixture	
Efficacy	5000 K.....	108 lm/W
	3500 K.....	92 lm/W
Fastening	Peel-n-stick or mounting clips (401203), 4 included with each unit	
Power capacity	6 units per SloanLED 60 W 12 VDC power supply	



* IP66 & IP68 ratings provide protection for extreme outdoor and wet applications or harsh weather exposure. Do not mount in a submerged application.

Power Supply Capacity

12 VDC Power supply†	Power output	SlimLINER Fixtures
20 W Power Supply	20 W	2
25 W Power Supply	25 W	2
60 W Power Supply	60 W	6
120 W Power Supply	120 W	6 x 2
Power used per foot/meter in Watts	2.25 W / 7.4 W per fixture	

† Configured for Class 2 Output.

SloanLED Headquarters

5725 Olivas Park Drive, Ventura, CA, USA
805.676.3200 • info@SloanLED.com

SloanLED Europe b.v.

Argonstraat 110, 2718 SN Zoetermeer, NL
+31 88 12 44 900 • europe@SloanLED.com

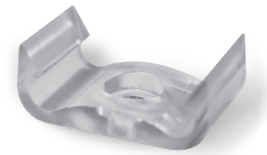


SloanLED.com

© 2021 SloanLED Rev C 2021-01-28

Specifications subject to change without notice.

Accessories



Mounting Clip

401203

Four (4) included with each unit.
Sold in bags of 20.

 **SloanLED**[®]
Leaders in LED Technology