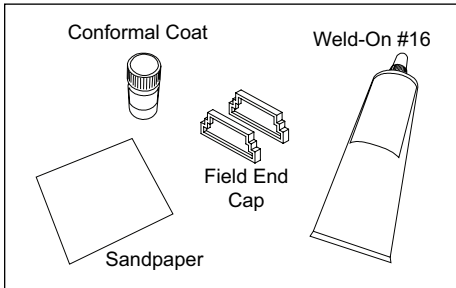


SlimLINER

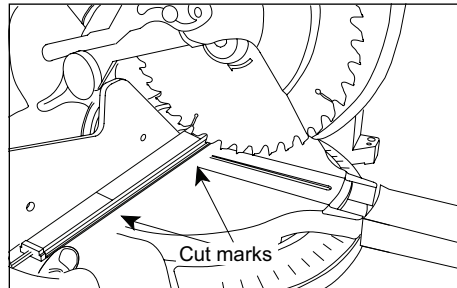
Field Cut Guide for 701956-5WL461

WARNING: Failure to strictly follow these instructions may subject the installer or others to personal injury. Failure to strictly follow these instructions will also void the manufacturer's warranties and may cause risk of fire, product damage, damage to property, and injury to persons. Please read all warnings contained below and follow all instructions carefully.

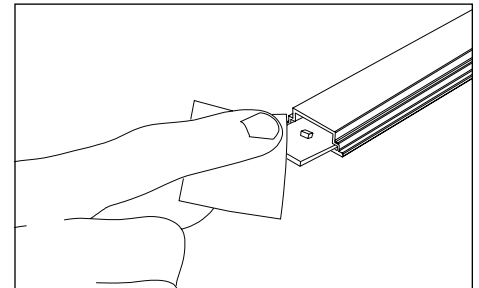
ATTENTION : Le non-respect des instructions peut exposer l'installateur ou d'autres personnes à des blessures corporelles. Ce non-respect des instructions annule également les garanties du fabricant et peut entraîner des risques d'incendie, d'endommagement du produit, de dommages des matériaux ou de blessures corporelles. Veuillez lire attentivement l'ensemble des recommandations ci-dessous et appliquer méthodiquement toutes les instructions.



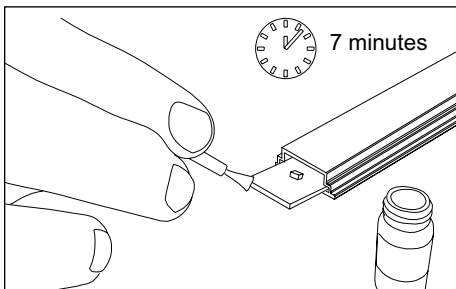
- 1. Gather materials:** Sandpaper, Weld-On #16, conformal coat for sealing edge of LED board (Humiseal 1B73 or Electrolube APL), and acrylic field end-cap.



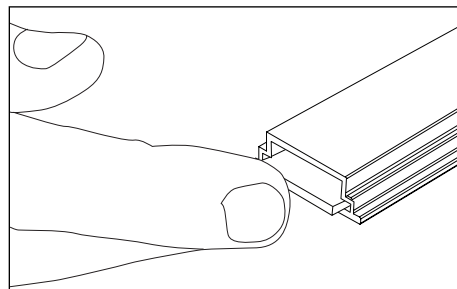
- 2. Cutting custom lengths:** Each SlimLINER can be cut in the field—for two (2) usable sides—in approximate 5.5" (140 mm) increments. If a custom length is required, use a power miter saw to make a clean, straight cut on the black cut line. **NOTE:** Perpendicular cuts ONLY. Set miter saw to 0°. No angled cuts. After cutting, each piece will still light if connected to power.



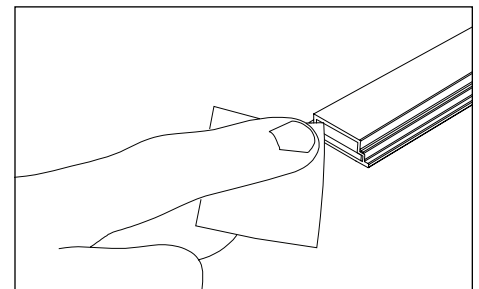
- 3. Deburr LED board and extrusion:** Gently pull LED board out of extrusion about 0.25" (6 mm). Deburr cut-end of LED Board and SlimLINER extrusion with enclosed sandpaper. Make sure to remove all debris from LED board and extrusion.



- 4. Seal end of LED board with conformal coat:** Brush conformal coat (Humiseal 1B73 or Electrolube APL) onto cut edge of LED board to seal from moisture. Allow to dry for 7 minutes. Do not apply conformal coat to cut edge of extrusion or end-cap.



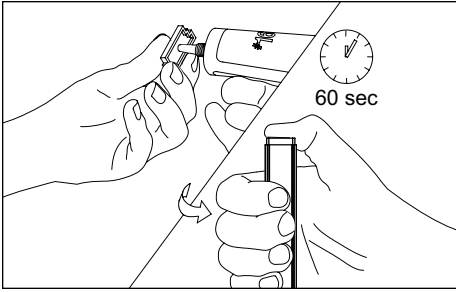
- 5. Push PCB back into extrusion:** After conformal coat has dried for at least 7 minutes, press the circuit board as far into the tube as it will go.



- 6. Clean extrusion:** Ensure end of extrusion is clean and free of any foreign material. If any conformal coat adhered to extrusion, gently sand off. Avoid sanding edge of LED board.

SlimLINER

Field Cut Guide for 701956-5WL461



NOTE: After cutting a custom length, any piece with black and red wires protruding from the original end cap will still light.

CAUTION: It is important to review and follow the safety instructions on the IPS Weld-On #16 Solvent Cement packaging.

ATTENTION : Il est important de consulter et de respecter les instructions de sécurité figurant sur l'emballage du produit Weld-On n° 16 de IPS.

- 7. Cap custom cut lengths:** Clean any debris from cut end and ensure that any exposed wires are not in contact with each other (trim wires if necessary). Apply IPS Weld-On #16 to entire rim of SlimLINER field end cap and bond to the cut end of SlimLINER segment. Apply pressure to end cap for 60 seconds to ensure a strong bond.

WARNING: Field end-cap must create a water tight seal. All debris must be removed to promote a good end-cap bond and to avoid electrical failure. Use of other types of saws and/or use of a dull blade may lead to chipping or cracking of the extrusion or create a cut that cannot be sealed resulting in product failure. Ensure extrusion bonding surface is clean. Contaminants or any adhesive other than Weld-On #16 on this surface may lead to poor bonding, water ingress, and product failure. Product failures resulting from failure to strictly follow field cut instructions are not covered by any product warranty.

ATTENTION : L'embout banc garantit l'étanchéité. Les résidus de la coupe doivent être retirés pour permettre une bonne adhésion de l'embout afin d'éviter toute défaillance électrique. L'utilisation d'un autre type de scie ou d'une lame émoussée peut entraîner l'écaillage ou la fissuration du profil extrudé et peut créer une ouverture ne pouvant pas être scellée avec la possibilité d'une défaillance du produit. Assurez-vous que la surface d'adhésion du profil extrudé soit propre. La présence de résidus ou l'utilisation de tout autre colle que le produit Weld-On n° 16 sur cette surface peuvent entraîner une mauvaise adhésion, des infiltrations d'eau ou une défaillance du produit. Les défaillances de produit résultant du non-respect des instructions de coupe sur chantier ne sont pas couvertes par les garanties du produit.

SAFETY WARNING: Failure of field end-cap to maintain a water tight seal may lead to water ingress and product failure. Product failures of this type could result in electrical shock and/or fire and damage to the product and materials which may come in contact with the product. Electrical shocks may cause injury.

CONSIGNE DE SÉCURITÉ : Tout défaut d'étanchéité de l'embout peut entraîner des infiltrations d'eau et une défaillance du produit. Ce type de défaillances peut provoquer une électrocution et/ou un incendie et peut aussi endommager les matériaux en contact avec le produit défectueux. L'électrocution peut entraîner des blessures.

WARNING: It is important to follow and review the safety instructions and MSDS for Weld-On #16 solvent cement packaging and Humiseal 1B73 or Electrolube APL conformal coats. Follow all safety instructions on Weld-On #16 packaging.

Humiseal 1B73 MSDS available at <http://www.humiseal.com/>

Electrolube APL MSDS available at <https://electrolube.com/>

Weld-On #16 MSDS available at <http://www.ipscorp.com/>

Customer service and technical support

SloanLED Headquarters

5725 Olivas Park Drive, Ventura, CA, USA
888.747.4LED (888.747.4533) • info@SloanLED.com

SloanLED.com

SloanLED Europe b.v.

Argonstraat 110, 2718 SN Zoetermeer, NL
+31 88 12 44 900 • Europe@SloanLED.com

