

HanleyLED STELLAR EDGE BIG

24
VDC

24V Edge illumination for light boxes



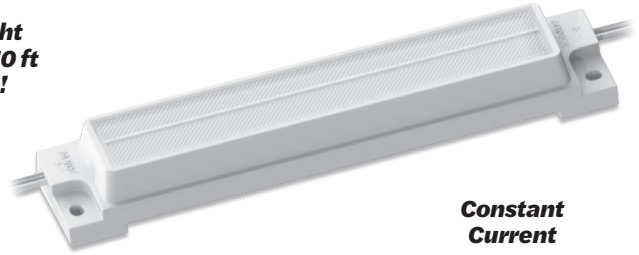
Stellar Series

Specifications

SKU	HLED-S1720
Ideal depth	For cabinets 5-48"
Beam angle	11° x 77° directional beam
Power (W)	7.2 W/mod (6.3 W/ft)
Efficacy	111 lm/W
Lumens	800 lm/mod (697 lm/ft)
Color temperature (CCT)	6500 K
Modules/ft	0.87/ft (fully-stretched)
Environment	IP67
Operating temp.	-40° C to +60° C
Storage temp.	-40° C to +70° C
Cascade	16 mods single-ended power feed 32 mods double-ended power feed
Packaging	16 mods/tray (18 ft/tray), 1 tray per box, 6 boxes per case
Warranty	10-Year Product/5-Year Limited Labor

Outdoor or indoor signs, new construction or retrofit

Edge light boxes 4-10 ft across!

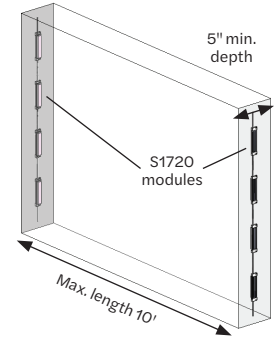


Constant Current

Max Perimeter Row Distance

- Ideal large cabinet use:
- Recommended depth range 5-48"
 - Recommended distance across 48-120"

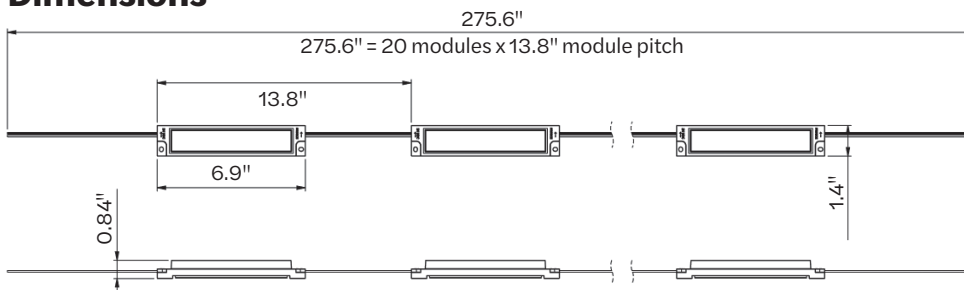
Depth	Cabinet height (max)	Module-to-module (Max.)
5"	50"	8"
6"	60"	
7"	84"	9"
8-9"	96"	
10-11"	120"	
12-15"	144"	



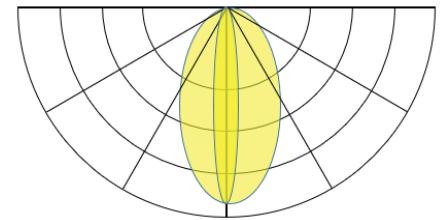
Power Supply Options

Product	35 W, 24V	60 W, 24V	96 W, 24V	100 W, 24V	150 W, 24V	240 W, 24V	288 W, 24V
Stellar Edge Big	4 mods	8 mods	13 mods	13 mods	20 mods	32 mods	39 mods

Dimensions



Light Distribution



principalsloan.com
325.227.4577
3490 Venture Dr., San Angelo, TX 76905