

STREET WRAP™ FX FLEX SIDE-BEND

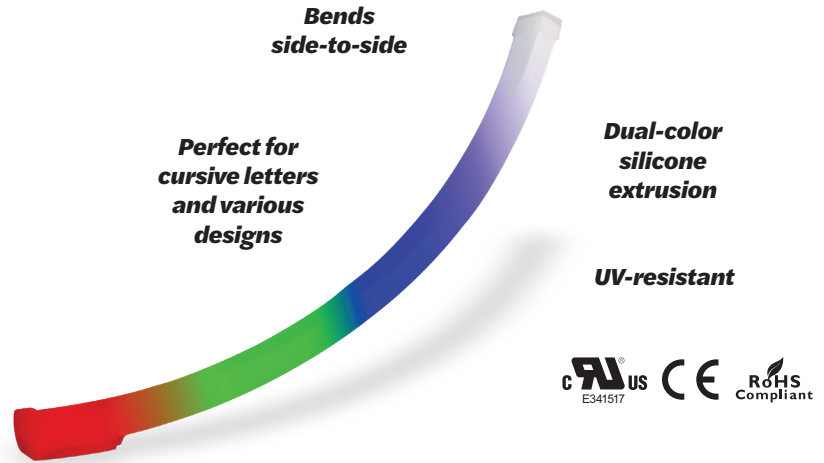
Flexible RGBW LED illumination

24
VDC

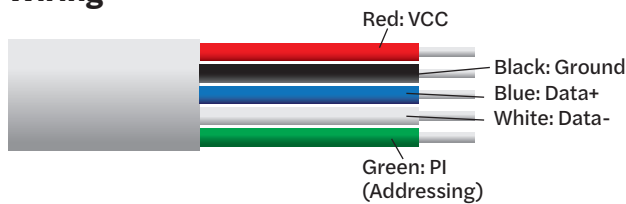


Specifications

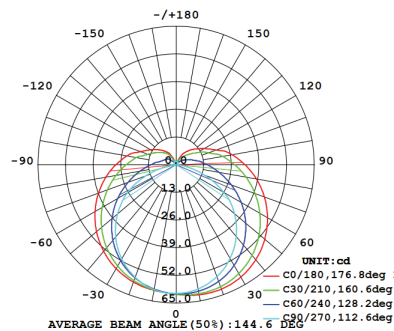
SKU	M-SV016-FX
Dimensions L x W x H	16 ft x 0.43" x 0.79" (length varies)
Input	24 V
Min. bend radius	2.36"
Color temperature	4000 K
Nominal wavelength.....	Red623 nm Green.....525 nm Blue.....468 nm
Lumens per foot.....	Red9.45 Green.....23.17 Blue4.27 White39.32 RGBW All.....76.2
Power	5 W/ft (max. 16 ft)
Operating temp.	-40° C to +65° C
Environment	IP67
Cut section length.....	3.9370"
Power supply.....	Principal Sloan 24V
Run footage	16 ft
Applications.....	Neon tube light source, building and sign outline lighting and cove lighting, indoor/outdoor, cursive letters and design
Warranty.....	5-year Product/5-year Labor



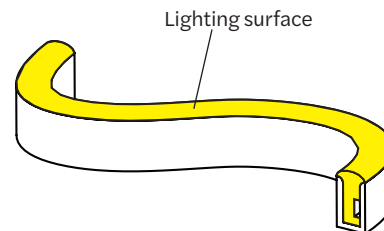
Wiring



Luminous Intensity Distribution



IMPORTANT WARRANTY INFO
 This warranty is void if any cuts are made in the field.
 Any cuts must be made by Principal Sloan to maintain warranty.
NOTE: The LED neon itself and all its components may not be mechanically stressed. Please ensure that the power supply is adequate to operate the total load. Only qualified personnel should be allowed to perform installations. The design of the housing should be according to the IP standards in the application. If surge protection structure not within power supplier, a lightning protector should be needed additionally. Before cutting and sealing, please read the user manual, and please ensure you have read and fully understand it. Please do not twist the product and do not bend it in wrong direction, see Figure 1 for a correct demonstration.



Street Wrap FX Flex Side-Bend only bends as shown above.

Fig. 1

Specifications subject to change without notice.

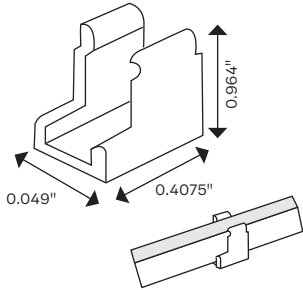
STREET WRAP™ FX FLEX SIDE-BEND

Flexible RGBW LED illumination

24
VDC

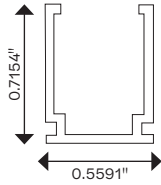


Accessories

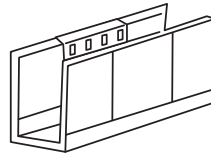


Transparent PC clips*
A-SVMH-CLPL

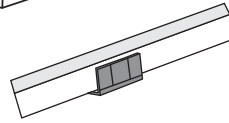
* Transparent clips are not warrantied if used in outdoor applications.



3.28-ft & 8-ft Aluminum mill finish extrusion for outdoor applications
3.28-ft: A-SVMH-TRAL-3
8-ft: A-SVMH-TRAL-8

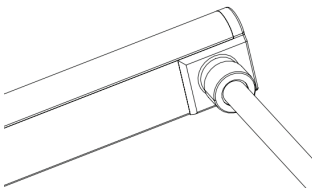


Aluminum mill finish clips for outdoor applications
A-SVMH-CLAL

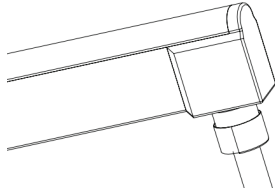


Stainless steel chain for curve installation
A-SVMH-CHSS

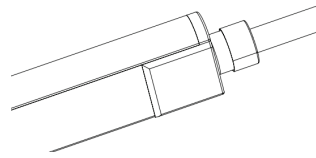
Types of Feed



Side feed



Bottom feed



End feed

principalsloan.com
325.227.4577
3490 Venture Dr., San Angelo, TX 76905

